

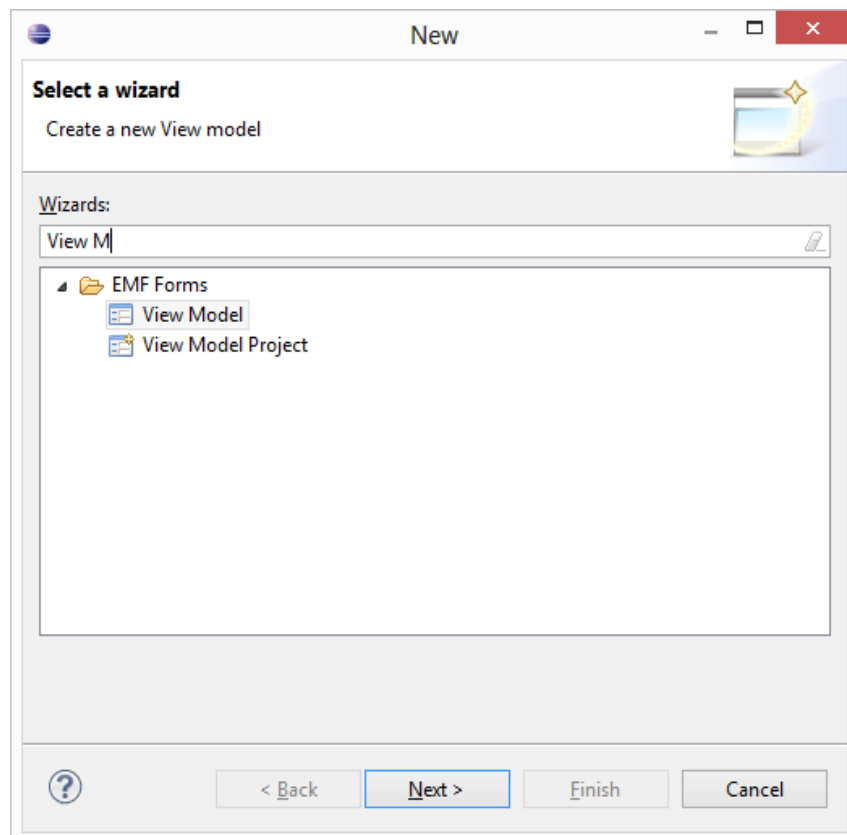
Customizing EMF Forms Editor using View Model

In the previous tutorial we learnt how to create a EMF Model and then render its UI using ECP Capabilities. Once having seen the Auto Rendering of ECP Forms, the 1st question that comes to everyone is can we customize the look of the editor rendered by ECP Forms.

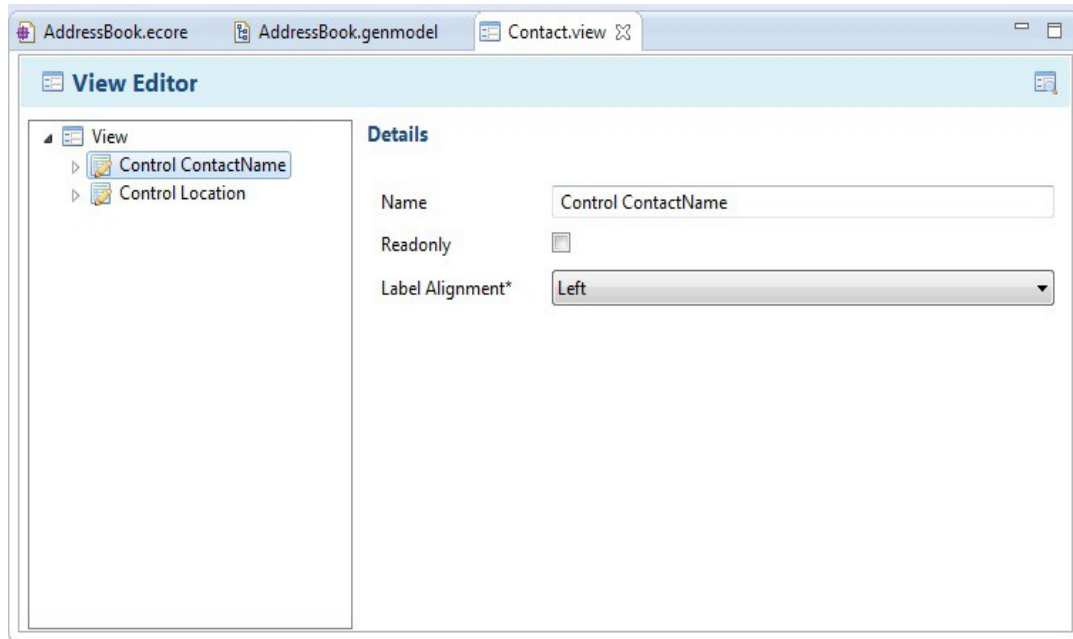
Answer to the question is YES. It is possible using ViewModel that is available as part of EMF Forms. In this tutorial we have documented the steps for customising your EMF Forms Editor using the View Model configuration file.

CREATION OF VIEW MODEL EDITOR FOR ECORE MODEL:

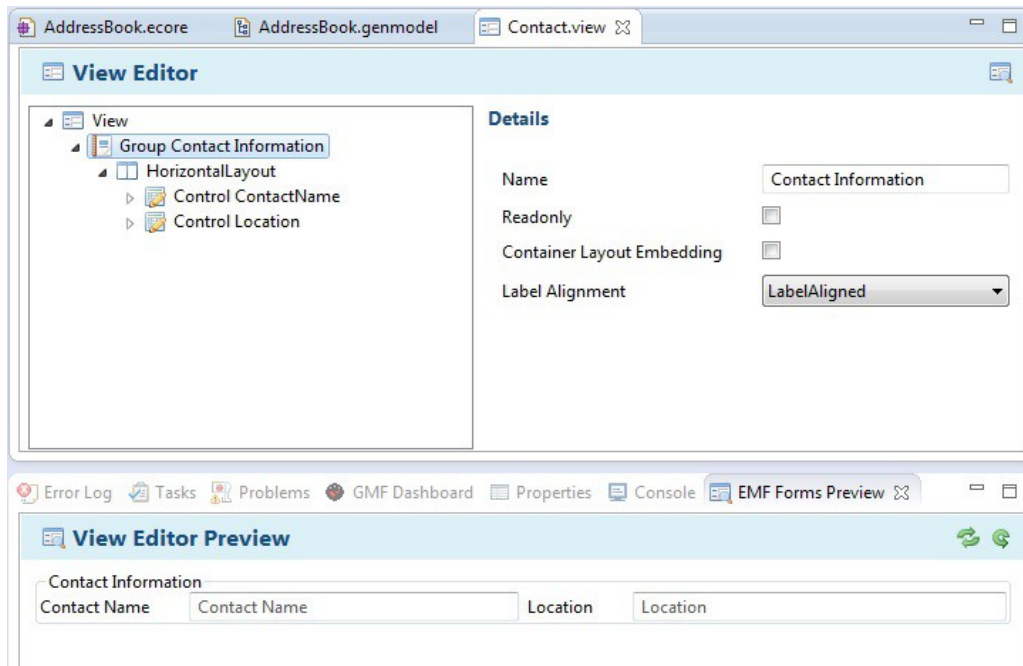
1. We will now create view model editor for the ecore model. Right click the .ecore file and select New → Other → View Model Project.



Click Next and give the project name as “com.ancit.addressbook.model.viewmodel” and browse the.ecore file in the next page and click Next. Then select the Model Class that you wish to change the look and feel for, in our example we have selected Contact class and click finish, an editor opens. Now you should get something like this.

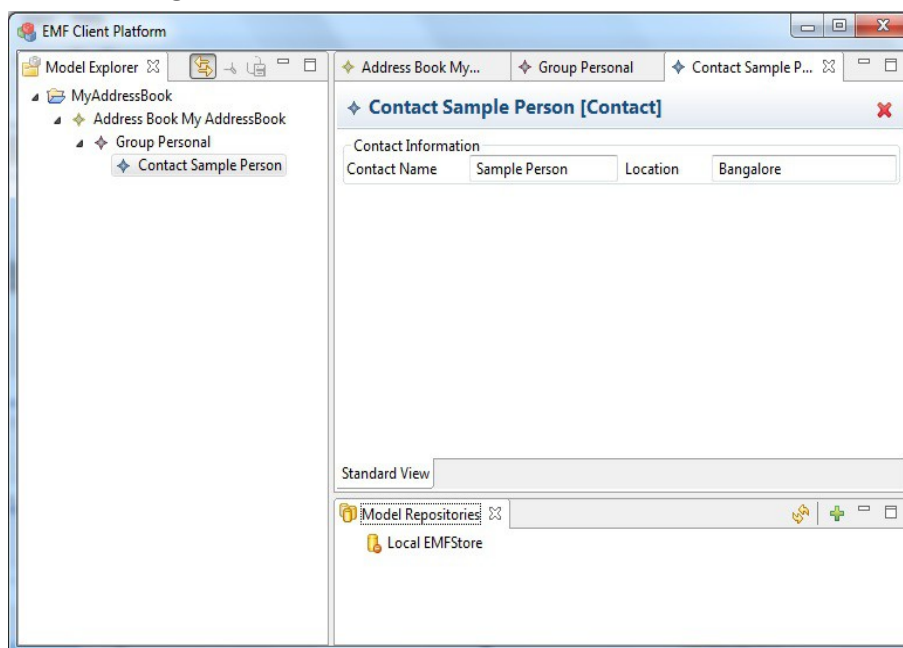


2. We will now align the layout of this fields in view model editor. Right click the root node and select group, give the name of the group as “Contact Information”. Then right click the Group node and select Horizontal layout. Then drag and drop both the nodes (Control ContactName and Control Location) into Horizontal layout node. You can now check the preview by clicking the button in top right corner of view model editor. It will open a preview in EMF Forms View. You should get something like this.



UPDATING THE RUN CONFIGURATION OF ECP 3.X APPLICATION:

Open the run configuration of ECP Application we already created and go to plugins tab, here click “Add Plugins” button and select “com.ancit.addressbook.model.viewmodel”, click Apply and Run. Now you should get something like this.



REFERENCES:

<http://eclipse.org/ecp/>

<http://eclipsesource.com/blogs/tutorials/getting-started-with-the-emf-client-platform/>

ABOUT ANCIT:

ANCIT Consulting is an Eclipse Consulting Firm located in the "Silicon Valley of Outsourcing", Bangalore. Offers professional Eclipse Support and Training for various Eclipse based Frameworks including RCP, EMF, GEF, GMF. Contact us on annamalai@ancitconsulting.com to learn more about our services.